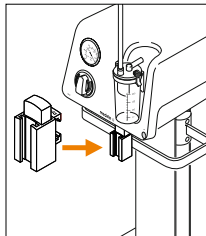
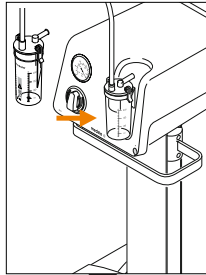
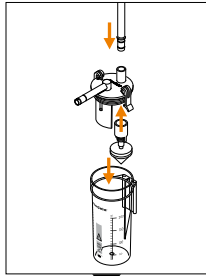


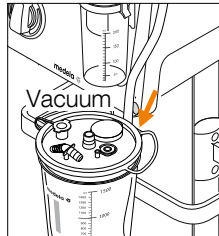
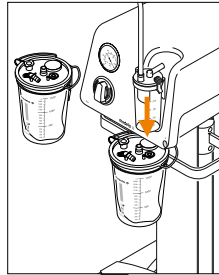
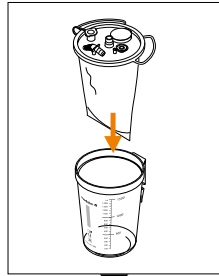
Medela Basic pump



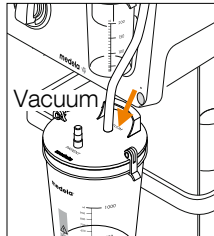
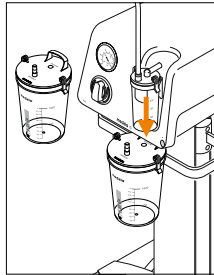
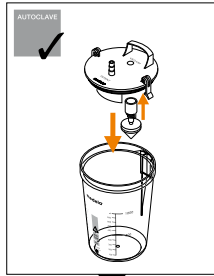
1



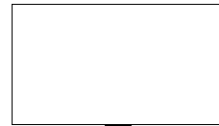
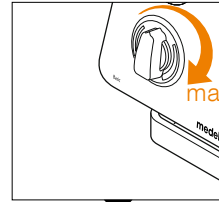
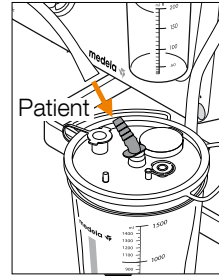
2



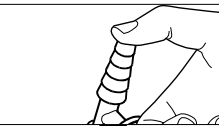
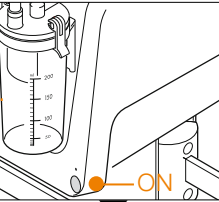
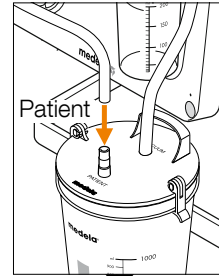
or



3

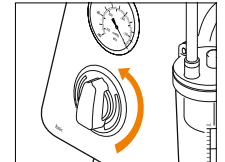


or



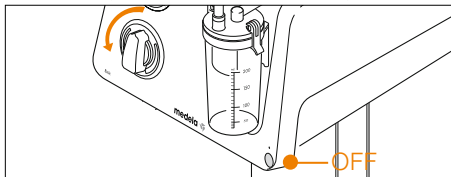
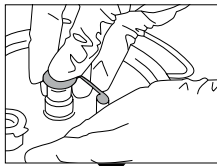
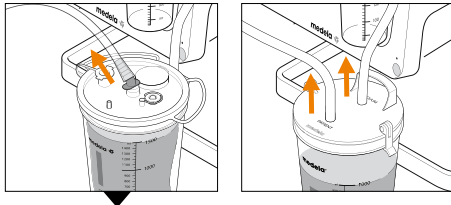
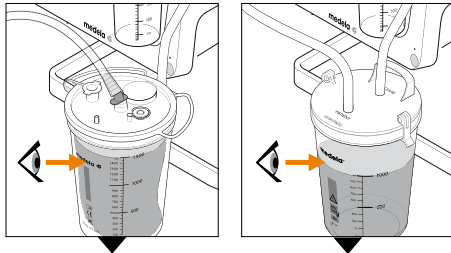
4

Sea Level	Vacuum	Tolerance +/- 15%
+ 2000 m	- 70 kPa	- 525 mmHg
+ 1000 m	- 79 kPa	- 592 mmHg
+ 500 m	- 85 kPa	- 638 mmHg
0 m	- 90 kPa	- 675 mmHg



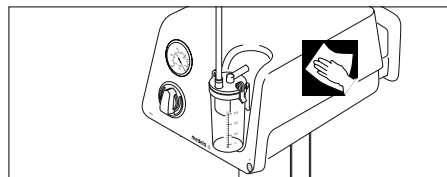
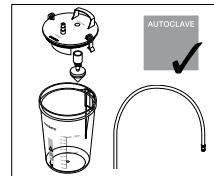
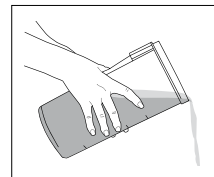
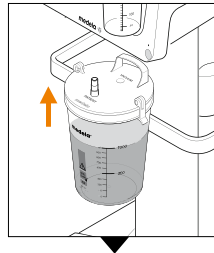
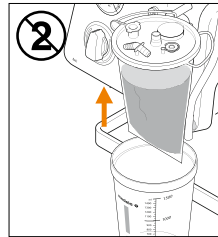
5

or



6

or



CE 0123

This Quick Card in no way replaces the Instructions for Use REF 200.5524/200.5525


Medela AG
 Lättichstrasse 4b
 6341 Baar, Switzerland
www.medela.com

© Medela AG/200.6110/2013-04/C

Precious life – Progressive care